



FIG. 1: ARNOLD PRINT WORKS FIRE INSURANCE MAP CIRCA 1927

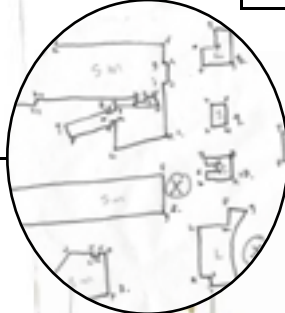


FIG. 2: CATALOG OF SHAPES FROM APW FIRE MAP

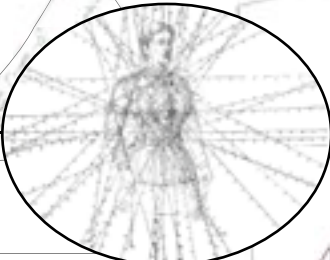
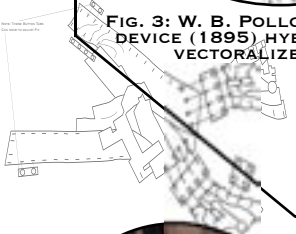


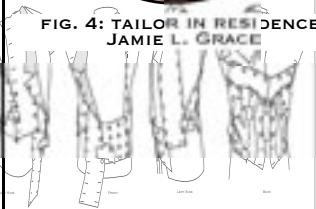
FIG. 3: W. B. POLLOCK MEASURING DEVICE (1895) HYBRIDIZED WITH VECTORIALIZED LINES



STEP ONE: INSERT BUTTON T



FIG. 4: TAILOR IN RESIDENCE, JAMIE L. GRACE



STEP THREE: FOLD-OVER PIECES AT NECK TO CREATE COLLAR



FIG. 5: THAT WORD WHICH...INC. COMPANY CHECK



FIG. 7: AN EXAMPLE OF MASCULINE ROYALTIES DRESS PRIOR TO SUIT DEVELOPMENT



FIG. 7: EXCERPT FROM ROD SERLING'S PATTERNS (1956) USED IN THE ALGORITHM



FIG. 8: LATE 19TH CENTURY PHOTOGRAPH OF THE ARNOLD PRINT WORKS, NOW MASS MOCA INTERIOR

#22 - STABLE GAS

#26 - APPARENT GAP RR

#18 - MULTI-FACTORY U-TOPUS ATTACHMENT

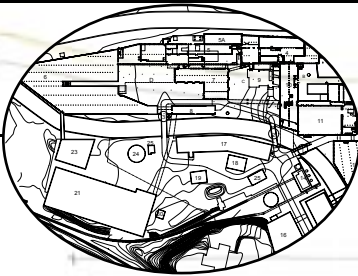


FIG. 18: CONTEMPORARY TOPOLOGICAL FIRE INSURANCE MAP OF MASS MOCA



FIG. 14: PATTERN DIAGRAM OF THE SUIT-PART ONE

WIFE AT HOME. SHE, HOW
 DAILY ENCOUNTERS WITH A LOCAL
 FIXED HIS EYE ON HER AND DOES NOT TA
 OR AN ANSWER. ONE DAY, THE HUSBAND CATO
 HIS WIFE IN BED WITH THE YOUNG MAN, WHO RU
 AWAY TO ESCAPE THE HUSBAND, LEAVING BEHIND
 SUIT. THE HUSBAND DOES NOT REJECT HIS WIFE.
 IN THE DAYS AND WEEKS THAT FOLLOW HE FORC
 HIS WIFE TO TREAT THE SUIT AS A THIRD PERSO
 THEIR HOME, TO SET A PLACE FOR IT AT MEALS
 Y WITH HER IN PUBLIC, TO PUT IT T
 HE HUSBAND WEARS HER DOWN
 INSPIRED CRUEL

FIG. 15: MISSING EXCERPT FROM A BARNEY SIMON PLAY, THE SUIT

#31 - NO RIVER



FIG. 12: NEW ENGLAND TEXTILE MILL FIRE



FIG. 13: ORIGINAL ARNOLD PRINT WORKS FABRIC LABEL

#16 - STABLE PHOENIX HOUSE

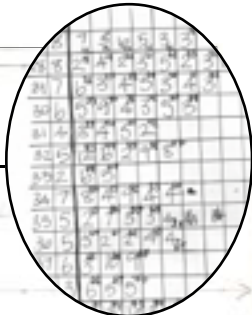


FIG. 10: GRAPH OF THE ALGORITHM BASED ON A HISTORY OF APW

#11B - STORE STREETS

#20 - HOORAC ICE CREAM



FIG. 9: THE CORPORATION'S SQUAT IN MASS MOCA - ORIGINALLY OWNED BY A LIFE-TIME EMPLOYEE OF APW



PROVISION

FIG. 11: JOE THOMPSON IN A TOUCHING AND FITTING SESSION

#41 - GARAGE